



# APT ROOFING

## Capability Statement



# APT Roofing Pty Ltd



0296667373



admin@aptroofing.com.au



www.aptroofing.com.au



@apt\_roofing



# Meet Our Team

Founded in 2007, APT Roofing Pty Ltd is a reputable, family-owned business located in the vibrant Eastern Suburbs of Sydney that prides itself on efficiency and quality. Having started as a team of two, the business has now grown to over 30 employees totalling over 150 years of roofing experience.

Our fleet of 15 vehicles has enabled us to offer our services at a large scale to all of Sydney and surrounding suburbs. As a fully qualified, licensed, and insured company, APT Roofing Pty Ltd takes great pride in delivering professional roofing solutions to residential, commercial, and industrial clients. Whether you require a complete roof replacement, swift repairs, or reliable maintenance, APT Roofing Pty Ltd is your trusted partner.



**Tony Thorne**

Founder



**Ben Fisher**

General Manager



**John Arhontakis**

Senior Project  
Manager



**James Elliott**

Senior Estimator



**Laura Kennedy**

Contracts  
Manager



**Deborah Thorne**

Accounts



**Joe Gardiner**

Marketing &  
Communications



**Kath Cahill**

Client Relations

### Customer Centric

*We prioritise customer satisfaction, maintaining open communication, and tailoring our services to meet your specific needs. Our team goes the extra mile to deliver exceptional service and exceed expectations.*



### Commitment to Safety

*At APT Roofing we adhere to strict safety protocols and standards to ensure the well-being of our team members, clients, and the surrounding environment.*



### Quality Materials

*We utilise top-quality materials from trusted suppliers, ensuring the longevity, durability, and performance of our roofing solutions.*

---

## Our Values

---

At APT Roofing, our values are the compass guiding our journey. We treat customers, employees, and suppliers with the utmost respect, mirroring the fairness we believe in. Our dedication to quality materials and superior craftsmanship extends the life of roofing systems, reflecting our commitment to excellence. Safety isn't negotiable – it's a promise that ensures each person returns home safely.

Our values define our legacy, shaping every project we undertake, every partnership we cultivate, and every roof we secure. We are fully accredited by Trades Monitor, Australia's leading contractor management and accreditation specialists.



Marseille Earth tiles by Monier

I had a rental property with dated roof tiles. The tenants had reported multiple occasions of leaks during heavy rain - notably during the record breaking wet 2020-2021 seasons. I called several roofers and only a few responded back and APT Roofing was one of them. What stood out for me was the prompt communication, punctuality, and commitment to complete the job. The quotes were easy to understand and pricing was fair. Keep in mind that this was when COVID-19 restrictions were in place and so much rain fell throughout the year. Finding quality roofers that could take on jobs was extremely challenging.

I had a complete roof replacement, plus sarking, done on the property with minimum interruptions to the tenants. Safety was paramount as safety railings were installed around the roof/gutters.

I liaised with Ben throughout the journey and he has been amazing. Both the tenants and I are very happy with the outcome. They delivered high quality finish and workmanship.

- Seandy W., Property Manager



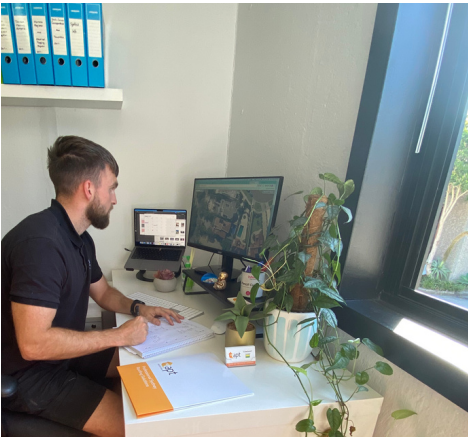
# Our Services

---

At APT Roofing, we provide a free no obligation quote whereby a full inspection of the roof is undertaken by one of our experienced estimators. This ensures that all existing and potential roof issues are identified.

## Our Capabilities

---



### Roof Reports & Inspections

Our expert assessment provides valuable insights into your roof's condition, identifying potential issues before they escalate. From storm damage to wear and tear, our estimator's expertise, along with the latest drone technology, provides comprehensive analysis that enables you to make informed decisions.



### Maintenance & Repairs

Maintenance is required on a roof to prolong its life expectancy. APT Roofing offers a prompt and efficient repair service to cope with Sydney's adverse weather and protect your home.

- Gutters and Downpipes
- Leafguards and Eaves
- Skylights and Whirlybirds



### Installation and Replacement (Reroof)

In many cases, the cost of repairing, fixing, or re-colouring an existing roof can be just as much – if not more – than the cost of undertaking a full reroof. In addition to giving your home a new modern finish, a full reroof ensures that current or potential problems with your existing roof will be resolved.

# Our Warranties

---

Our Lutum (previously Boral) and Monier concrete and terracotta products come with a warranty for up to 50 years. Any roof installed by APT Roofing comes with a 7 year workmanship warranty.

## Our Warranties

---

**7 YEAR**

**TOTAL ROOF WARRANTY**

### **Workmanship Warranty\***

Guarantees our workmanship for all roof replacements for a 7 year period upon completion.

**50 YEAR**

**PRODUCT WARRANTY**

### **50 year Product Warranty\***

Performance guarantee for selected Lutum and Monier terracotta and concrete tiles for all roof replacements and new roof installations.

**25 YEAR**

**PRODUCT WARRANTY**

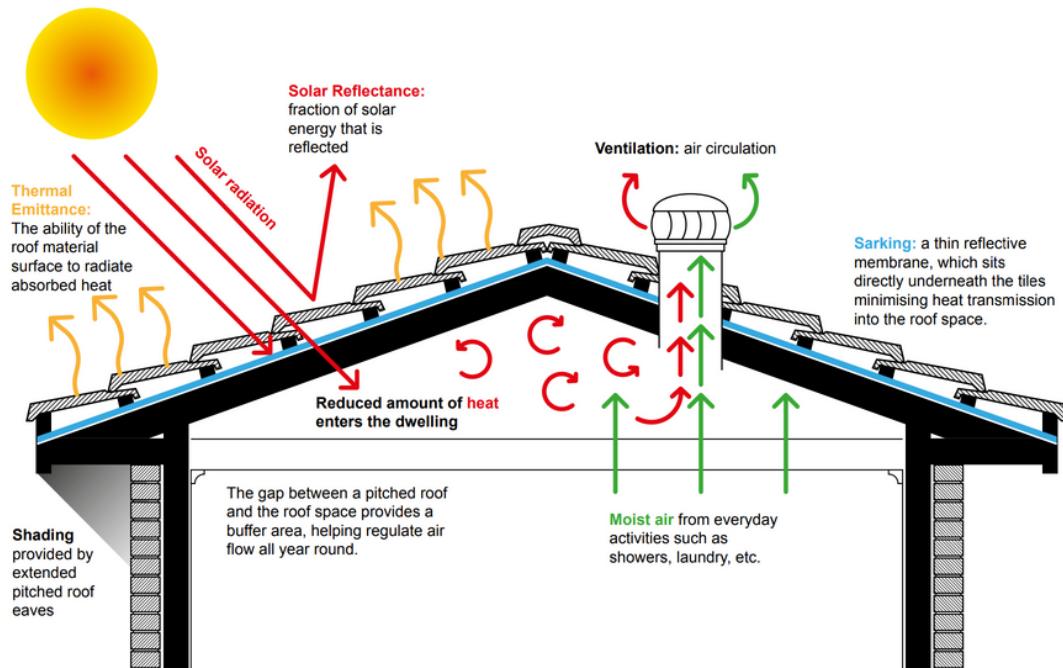
### **25 year Product Warranty\***

Performance guarantee for all Colorbond roof replacement and new roof installations.

\*Refer to full warranty documents at [www.aptroofing.com.au/terms-of-trade](http://www.aptroofing.com.au/terms-of-trade)

# Creating a Roofing System

## Insulation | Ventilation | Sarking



### Insulation

- Greatly reduces how much heat gets in through the ceiling.
- Helps keep your home cooler when it's hot and warmer in the winter.
- Saves you money on heating and cooling your home.
- An affordable way to make your home more comfortable.

### Ventilation

- Drives out moisture in winter that could harm insulation performance.
- Eases the strain on ceiling ducted air conditioning systems.
- Eliminates the hot air from roof spaces in summer to allow insulation to work far more effectively
- Lowers energy expenses

### Sarking

- Reflects as much as 95% of the heat away from your home.
- Is a second barrier for water to run off
- Acts as a barrier to dust.
- Reduces the need for heating and cooling devices.
- Provides additional storm and bush fire protection.



# Why Reroof?

There are a number of functional and aesthetic benefits that apply when choosing to reroof a home.

## Benefits

---

- The roof is one of the most visible features of a home and nothing renews and enhances it like a full reroof which can add value to your home.
- Reroofing can offer the opportunity to modernise and add new features such as solar panels, and eco-friendly additions.
- In addition to giving your home a new modern finish, a full reroof ensures that current or potential problems with your existing roof will be removed.
- New roofing materials often come with improved insulation properties, which can lead to better energy efficiency.

## Checking your Roof

---



Check for any cracked tiles, displacement of tiles or build-up of debris. For metal roofs, we check for metal corrosion (rust), holes, and tearing



Check old cement mortar bedding. Check screw fixings that may be worn or corroded.



Check all penetrations, skylights, chimney flashings, breather pipes, TV aerials, and make sure they are sealed and watertight.



Assess the need to replace individual tiles, re-spray or re-roof and sark.



Check for signs of leaks and water damage



Check flashings, gutters and downpipes.

# STRATA

## Our Projects

### Kurraba Point Strata Block



*Our experience with APT Roofing was exceptional. We had our strata buildings roof fully replaced and were thoroughly impressed with the quality of their workmanship and communication throughout the project. We highly recommend their services.*

*- Andrew C., Property Manager*



### Riverside Girls School in Huntleys Point

Combining Monier Earth, Cottage Red, and Bungalow roof tiles, our team achieved a visually stunning and distinctive appearance that harmonised with the school's architecture, setting it apart from any other school in Sydney.

We take pride in our team's extensive certifications and training, equipping them to handle every aspect of the project securely.



## Double Bay Apartment Complex

In the charming suburb of Double Bay, APT Roofing showcased its expertise with a flawless new roof installation, using the elegant Lutum French roof tiles in Slate Matt.

Our comprehensive approach included gutter cleaning and inspections to safeguard against water damage and optimise drainage.



## Bronte Beach Unit Blocks

With the installation of Colorbond Ultra in Monument, our focus remained on resident safety and convenience. Our approach to planning minimised disruptions, resulting in a seamless project. The outcome: a striking, protective new roof that enhances the unit blocks' visual appeal and adds substantial value to homes. This commitment extends to our Bronte Beach unit block roof replacement, where quality combines with coastal resilience for enduring homeowner value.



# RESIDENTIAL

## Our Projects

### Residential Home in Maroubra



*French Mixed Blend Terracotta tiles by Lutum*

APT Roofing successfully completed a residential re-roofing project in Woollahra, boasting an exquisite and contemporary look achieved through the use of Lutum French Terracotta in Sydney Red. The project involved meticulous installation, ensuring a seamless and aesthetically pleasing finish.

With a focus on both aesthetics and functionality, the Lutum French Terracotta tiles not only enhanced the property's appearance but also provided exceptional weather resistance and durability.

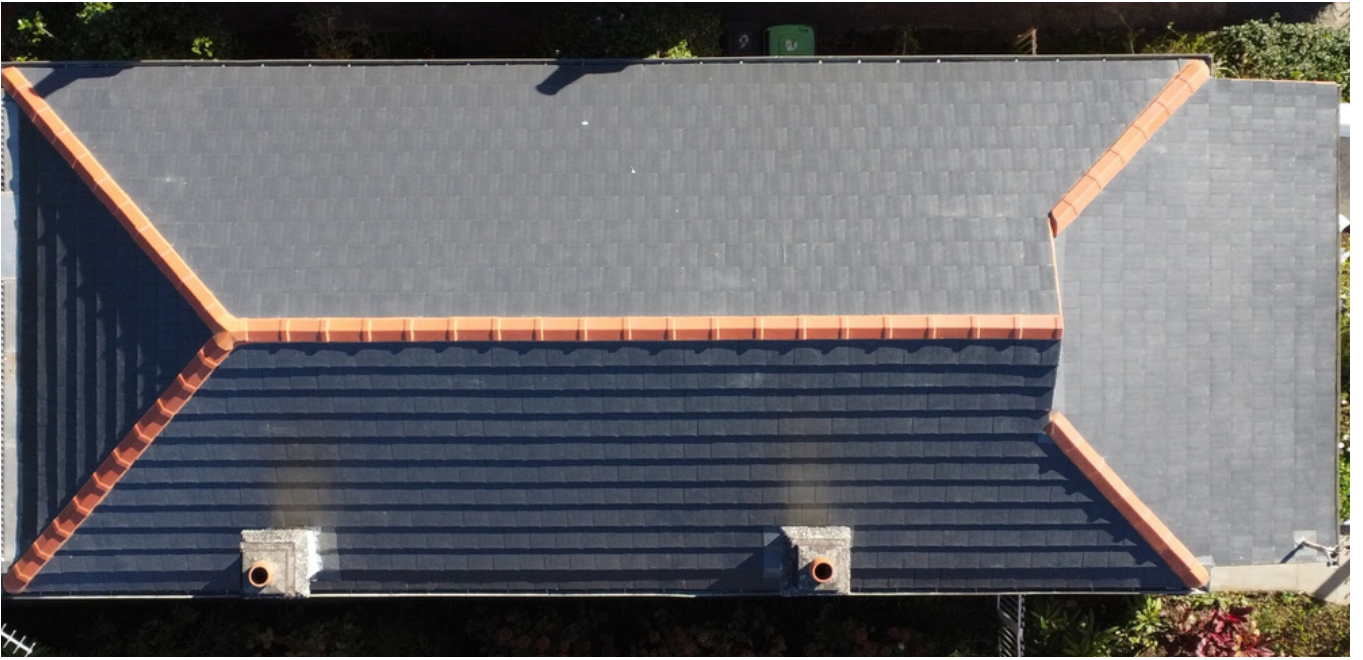
### **Heritage Style Woollahra Family Home**



### **Modern Randwick Family Home**

APT Roofing embarked on a transformative roofing project in Randwick, which involved replacing the roofing of a large house with high-quality Colorbond materials. Our skilled team ensured precise and meticulous installation, resulting in a flawless and long-lasting finish. In addition to providing exceptional roof replacement, we also offer a range of supplementary services to enhance the functionality and comfort of the property.

This includes installing whirlybirds to improve ventilation, adding skylights for natural light infusion into interior spaces, and fitting leaf guard systems to prevent gutter blockages. APT Roofing's comprehensive approach showcases our commitment to delivering personalised and efficient roofing solutions for the homeowners in Randwick.



# Choosing your Tile Style

Most homeowners don't usually think about roofing materials—until they need a strong, long-lasting roof.

Our quality roofs, born from years battling Australia's elements, offer both strength and style.

## Our Partners

---



For added peace of mind, our showroom is where you can see and touch different tiles to find what you like. Our experts are here to help you make the best choice.

**Come visit our Showroom today**  
and start making your home even better with the  
perfect tiles.

Unit 3/57B Rhodes St, Hillsdale NSW 2036



## Sydney Office & Showroom

Unit 3, 57b Rhodes Street,  
Hillsdale NSW 2036  
PO Box 269 Matraville NSW 2036  
☎ 02 9666 7373  
✉ strata@aproofing.com.au

## Northside Office

Blaxland Road,  
Gladesville, NSW 2111  
☎ 02 9661 8224  
✉ northside@aproofing.com.au



[www.aproofing.com.au](http://www.aproofing.com.au)

